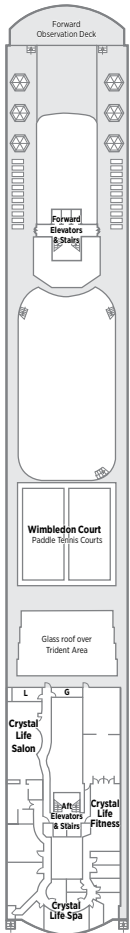
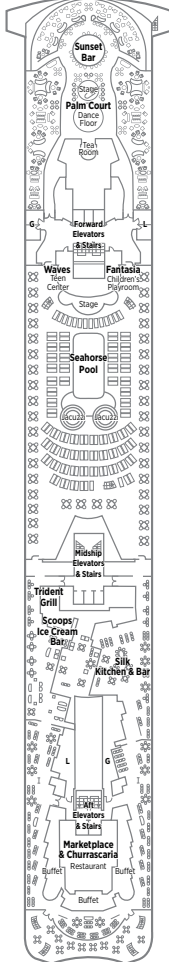


CRYSTAL SERENITY | DECK PLANS



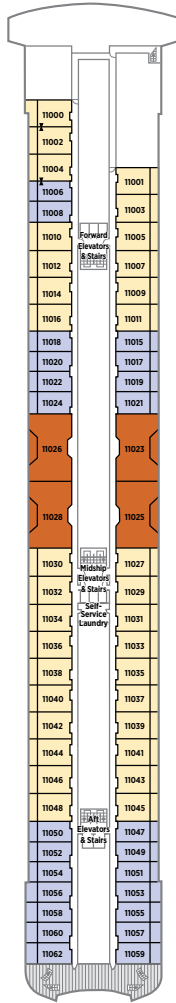
SUN DECK 13

- Crystal Life Fitness
- Crystal Life Salon
- Crystal Life Spa
- Sun Deck
- Wimbledon Court



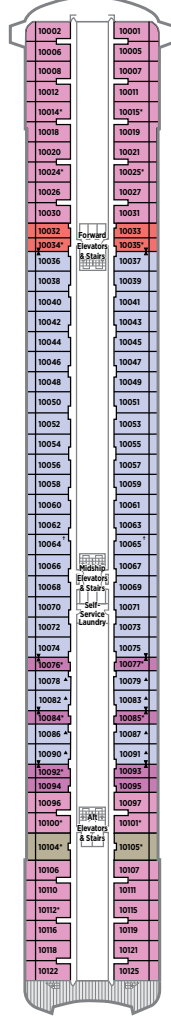
LIDO DECK 12

- Marketplace & Churrascaria Restaurant
- Palm Court
- Scoops Ice Cream Bar
- Seahorse Pool
- Silk Kitchen & Bar
- Sunset Bar
- Trident Grill
- Waves & Fantasia



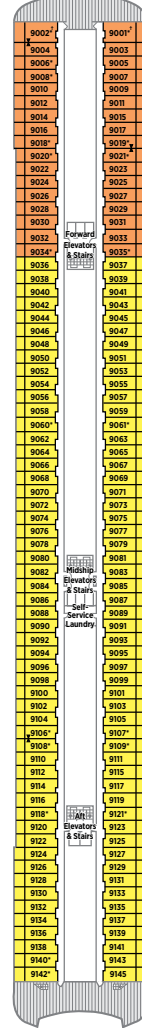
PENTHOUSE DECK 11

- Guest Room Categories CP, PS & PH
- Self-Service Laundry



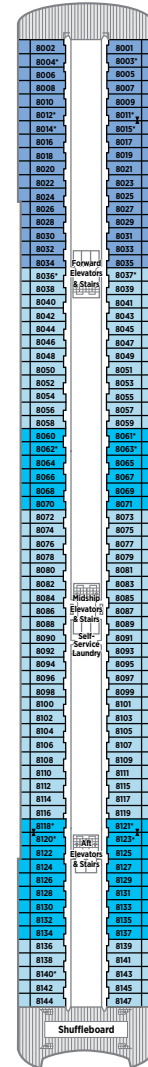
PENTHOUSE DECK 10

- Guest Room Categories SP, PH, SH, P1 & P2
- Self-Service Laundry



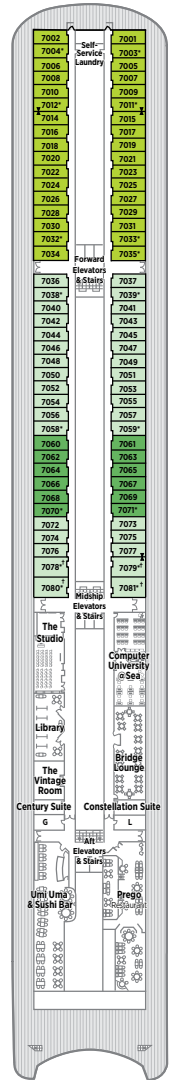
SEABREEZE DECK 9

- Guest Room Categories A1 & A2
- Self-Service Laundry



HORIZON DECK 8

- Guest Room Categories B1, B2 & B3
- Self-Service Laundry
- Shuffleboard Courts



PROMENADE DECK 7

- Bridge Lounge
- Computer University@Sea
- Guest Room Categories C1, C2 & C3
- Library
- Prego
- Self-Service Laundry
- The Studio
- The Vintage Room
- Umi Uma & Sushi Bar



Sun Deck.....	13	Seabreeze Deck.....	9	Tiffany Deck.....	6
Lido Deck.....	12	Horizon Deck.....	8	Crystal Deck.....	5
Penthouse Deck.....	11	Promenade Deck.....	7	Excursion Deck.....	4
Penthouse Deck.....	10				

PENTHOUSE / STATEROOM CATEGORIES

- CP | CRYSTAL PENTHOUSE WITH VERANDAH Penthouse Deck 11
1,368 SQ. FT. (127.1 SQ. M.)

- PS | PENTHOUSE SUITE WITH VERANDAH AND THIRD BERTH Penthouse Deck 11
549 SQ. FT. (51 SQ. M.)

- SP | SEABREEZE PENTHOUSE SUITE WITH VERANDAH AND THIRD BERTH Penthouse Deck 10
544 SQ. FT. (50.5 SQ. M.)

- PH | PENTHOUSE WITH VERANDAH AND THIRD BERTH Penthouse Deck 11
412 SQ. FT. (38.3 SQ. M.) Penthouse Deck 10

- SH | SEABREEZE PENTHOUSE WITH VERANDAH AND THIRD BERTH Penthouse Deck 10
412 SQ. FT. (38.3 SQ. M.)

- P1 | ● P2 | ● A1 | ● A2 | ● B1 | ● B2 | ● B3 Penthouse Deck 10
DELUXE STATEROOM WITH VERANDAH Seabreeze Deck 9
267 SQ. FT. (24.8 SQ. M.) Horizon Deck 8

- C1 | ● C2 | ● C3 | DELUXE STATEROOM WITH LARGE PICTURE WINDOW Promenade Deck 7
213 SQ. FT. (19.8 SQ. M.)

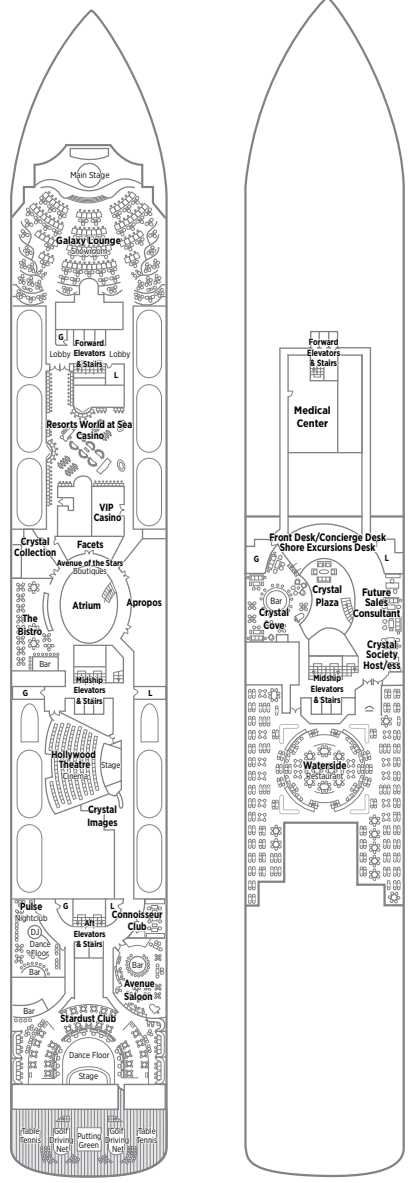
SH: Slightly limited view 10001, 10002, 10005, 10006
 B2: Slightly limited view
 C2: Slightly limited view

SPECIFICATIONS

GUEST CAPACITY.....	980
STAFF TO GUEST RATIO.....	1 TO 1.5
GROSS REGISTERED TONS.....	68,870
LENGTH.....	820 FT. (250 M.)
WIDTH.....	105.6 FT. (32.2 M.)
DRAFT.....	24.9 FT. (7.6 M.)
CRUISING SPEED.....	MAX 22 KNOTS

* Third berth available; as well as in Penthouses (PS, PH, SP and SH) with the exception of those designed for guests with disabilities, 10064 and 10065. **Note:** Third berth waiver required. See crystalcruises.com for details.

- † Staterooms for guests with disabilities
- ◀▶ Connecting staterooms
- ▲ Queen-bed configuration only



TIFFANY DECK 6

CRYSTAL DECK 5

- | | | |
|--------------------|-----------------------------|--------------------------|
| Apropos | Golf Driving Nets | Concierge Desk |
| Atrium | Hollywood Theatre | Crystal Cove |
| Avenue Saloon | Pulse | Crystal Plaza |
| Connoisseur Club | Putting Green | Crystal Society Host/ess |
| Crystal Collection | Stardust Club | Front Desk |
| Crystal Images | Table Tennis | Future Sales Consultant |
| Facets | The Bistro | Medical Center |
| Galaxy Lounge | Resorts World at Sea Casino | Shore Excursions Desk |
| | VIP Casino | Waterside Restaurant |



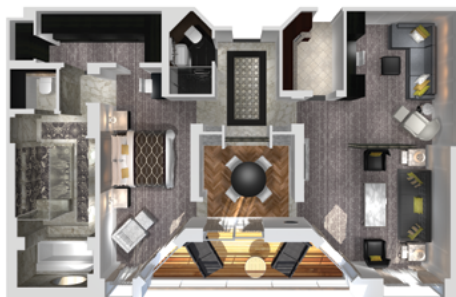
CRYSTAL PENTHOUSE WITH BUTLER SERVICE

1,368 SQ. FT. (127.1 SQ. M.) WITH VERANDAH

- CP
- ◆ Large private verandah and custom stone foyer floor
- ◆ Spacious living room
- ◆ Separate den with full-size sleeper sofa, TV, and closet plus separate dining area with ocean view and binoculars
- ◆ Complimentary wine plus choice of spirits from set menu upon embarkation
- ◆ Two TVs
- ◆ iPod docking stations and cordless phone
- ◆ Complimentary unlimited Wi-Fi
- ◆ Guest bathroom with shower
- ◆ Butler's pantry with refrigerator and espresso-cappuccino machine
- ◆ Large bedroom with queen-size bed or twin beds with sumptuous bedding
- ◆ Master bath featuring a television, Duravit spa flotation tub with ocean view, and state-of-the-art shower with customized shower direction and a heated bench, plus bidet
- ◆ Master walk-in custom closet with illuminated rods and custom shelving and security safe
- ◆ Sophisticated one-touch lighting and surround-sound system and "Do Not Disturb" electronic doorbell
- ◆ A total of two private car and driver transfers per voyage from/to the designated airport in the port city for embarkation and disembarkation or transfers to/from other locations within 100 miles of the port city for embarkation/disembarkation*

ADDITIONAL COMPLIMENTARY CRYSTAL PENTHOUSE AMENITIES

- ◆ Attentive butler service
- ◆ Free in-suite phone usage (Two hours per cruise/per room)
- ◆ Free pressing, laundry and dry cleaning
- ◆ Unlimited complimentary specialty restaurant dining (by reservation, based on space availability)**



PENTHOUSE SUITE WITH BUTLER SERVICE

549 SQ. FT. (51 SQ. M.) WITH VERANDAH

- PS
- ◆ Private verandah
- ◆ Spacious living area
- ◆ Dining area
- ◆ Complimentary wine plus choice of spirits from set menu upon embarkation
- ◆ Two TVs
- ◆ Sophisticated one-touch lighting system
- ◆ "Do Not Disturb" electronic doorbell
- ◆ Complimentary unlimited Wi-Fi
- ◆ Separate bedroom area
- ◆ Vanity in bedroom
- ◆ Queen-size bed or twin beds with sumptuous bedding, and third berth
- ◆ Full Jacuzzi bathtub
- ◆ Separate shower
- ◆ Bidet
- ◆ Walk-in closet
- ◆ Refrigerator
- ◆ Security safe
- ◆ Binoculars

ADDITIONAL COMPLIMENTARY PENTHOUSE SUITE AMENITIES

- ◆ Attentive butler service
- ◆ Free in-suite phone usage (One hour per cruise/per room)
- ◆ Complimentary pressing service
- ◆ Unlimited complimentary specialty restaurant dining (by reservation, based on space availability)**



SEABREEZE PENTHOUSE SUITE WITH BUTLER SERVICE

544 SQ. FT. (50.5 SQ. M.) WITH VERANDAH

- SP
- ◆ Private verandah
- ◆ Spacious living area
- ◆ Queen-size bed or twin beds with sumptuous bedding and third berth
- ◆ Large luxury shower with body jets
- ◆ Walk-in closet
- ◆ TV
- ◆ Complimentary welcome bottle of champagne upon arrival
- ◆ Complimentary wine plus choice of spirits from set menu upon embarkation
- ◆ Refrigerator
- ◆ Binoculars
- ◆ "Do Not Disturb" electronic doorbell

ADDITIONAL COMPLIMENTARY SEABREEZE PENTHOUSE SUITE AMENITIES

- ◆ Attentive butler service
- ◆ Free in-suite phone usage (One hour per cruise/per room)
- ◆ Complimentary pressing service
- ◆ Unlimited complimentary specialty restaurant dining (by reservation, based on space availability)**





PENTHOUSE WITH BUTLER SERVICE

412 SQ. FT. (38.3 SQ. M.) WITH VERANDAH

● PH

- ◆ Private verandah
- ◆ Sizeable living area
- ◆ Complimentary wine plus choice of spirits from set menu upon embarkation
- ◆ Queen-size bed or twin beds with sumptuous bedding, and third berth
- ◆ Vanity in dressing area
- ◆ TV
- ◆ Sophisticated one-touch lighting system
- ◆ “Do Not Disturb” electronic doorbell
- ◆ Complimentary unlimited Wi-Fi
- ◆ Full Jacuzzi bathtub
- ◆ Vanity in dressing area
- ◆ Separate shower
- ◆ Walk-in closet
- ◆ Refrigerator
- ◆ Security safe
- ◆ Binoculars

ADDITIONAL COMPLIMENTARY PENTHOUSE AMENITIES

- ◆ Attentive butler service
- ◆ Complimentary pressing service
- ◆ Unlimited complimentary specialty restaurant dining (by reservation, based on space availability)**



SEABREEZE PENTHOUSE WITH BUTLER SERVICE

412 SQ. FT. (38.3 SQ. M.) WITH VERANDAH

● SH

- ◆ Private verandah
- ◆ Spacious living area
- ◆ Shared entryway to connect two Seabreeze Penthouses
- ◆ Queen-size bed or twin beds with sumptuous bedding and third berth
- ◆ Large luxury shower with body jets
- ◆ Walk-in closet
- ◆ TV
- ◆ Complimentary welcome bottle of champagne upon arrival
- ◆ Complimentary wine plus choice of spirits from set menu upon embarkation
- ◆ Refrigerator
- ◆ Binoculars
- ◆ “Do Not Disturb” electronic doorbell

ADDITIONAL COMPLIMENTARY SEABREEZE PENTHOUSE SUITE AMENITIES

- ◆ Attentive butler service
- ◆ Complimentary pressing service
- ◆ Unlimited complimentary specialty restaurant dining (by reservation, based on space availability)**

SH: Slightly limited view
10001, 10002, 10005, 10006



DELUXE STATEROOM WITH VERANDAH

267 SQ. FT. (24.8 SQ. M.) WITH VERANDAH

● P1 | ● P2 | ● A1 | ● A2
● B1 | ● B2 | ● B3

- ◆ Private verandah
- ◆ Spacious living area
- ◆ Soft leather sofa in seating area
- ◆ Queen-size bed or twin beds with sumptuous bedding
- ◆ Complimentary select beer, wine and spirits upon request
- ◆ TV
- ◆ “Do Not Disturb” electronic doorbell
- ◆ Full bathtub/shower combination
- ◆ Refrigerator
- ◆ Security safe

P2: Forward | A2, B3: Forward | B2: Slightly limited view



DELUXE STATEROOM WITH LARGE PICTURE WINDOW

213 SQ. FT. (19.8 SQ. M.)

● C1 | ● C2 | ● C3

- ◆ Soft leather sofa in seating area
- ◆ Queen-size bed or twin beds with sumptuous bedding
- ◆ Complimentary select beer, wine and spirits upon request
- ◆ TV
- ◆ “Do Not Disturb” electronic doorbell
- ◆ Full bathtub/shower combination
- ◆ Refrigerator
- ◆ Security safe

C2: Slightly limited view | C3: Forward



PENTHOUSES / STATEROOMS FEATURE

- ◆ COMPLIMENTARY UNLIMITED WI-FI
- ◆ STATE-OF-THE-ART TELEVISION/S WITH ON DEMAND MOVIES
- ◆ COMPLIMENTARY SOFT DRINKS AND BOTTLED WATER IN ROOM
- ◆ REFRIGERATOR
- ◆ SECURITY SAFE
- ◆ HAIR DRYER
- ◆ ETRO BATHROBES, KIMONOS AND SLIPPERS

*Restrictions apply. Services are nontransferable. There are no credits given for forfeited services. Category images SP and SH are artists' renderings. **One reservation per restaurant may be made in advance of sailing via Priority Check-in & Planning Center. All subsequent reservations must be made on board and are subject to availability. **Please note:** Penthouse and stateroom photos/renderings shown are examples of what is available and do not necessarily reflect all rooms or latest refurbishments, including but not limited to staterooms for guests with disabilities. The penthouse specially designed for guests with disabilities does not feature third berth.